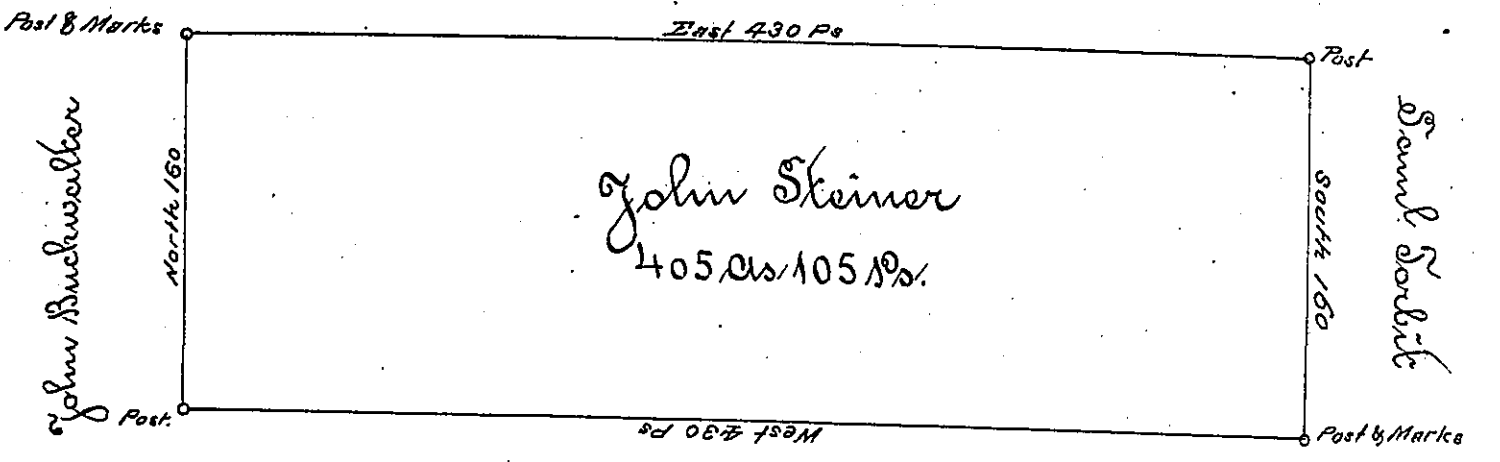


John Burkholder



John Kobay

Situated on the Waters of Swlick Creek including some good Springs in Wheatfield Township, Westmoreland County, containing 405 acres & 105 perches & allowance of six pCent for Roads &c Surveyed for John Steiner the 21st day of Nov^r 1794 on Warrant dated the 3^d day of May 1793

Daniel Broadhead Esq D. J.

James Ross M. D.

IN TESTIMONY that the above is a copy of the original remaining on file in the Department of Internal Affairs of Pennsylvania, made conformably to an Act of Assembly approved the 16th day of February, 1833, I have hereunto set my Hand and caused the Seal of said Department to be affixed at Harrisburg, this

first day of August 1894

W. J. Stewart
 Secretary of Internal Affairs